



AFTER THE HARVEST ANNUAL REPORT 2021

BECAUSE GOOD FOOD SHOULD GO TO PEOPLE, NOT LANDFILLS

After the Harvest rescues nutritious fruits and vegetables from going to waste and donates them to agencies serving hungry people, primarily in Greater Kansas City. In 2021 as effects of the pandemic continued to plague our global community, ATH shifted resources and strategies in pursuit of our mission: to fight food insecurity, improve nutrition, and reduce food waste.

OUR MISSION: TO FIGHT FOOD INSECURITY

In 2021, ATH began shifting its distribution strategy to bring larger quantities of rescued produce to food deserts across the Kansas City metro area.

FOOD INSECURITY IN OUR REGION



- Wyandotte County: 14.6% adults, 24.1% children
- Douglas County: 14.3% adults, 17.2% children
- Johnson County: 9.7% adults, 13.3% children
- Jackson County: 14.1% adults, 18% children
- Platte County: 10.8% adults, 9.9% children
- Clay County: 11.3% adults, 11.5% children
- Cass County: 11.6% adults, 12.8% children



207% growth in value of rescued produce

178% increase in pounds of produce donated directly to agencies

2021 IN REVIEW



3.8 million

pounds of produce rescued

389

agencies served in 2021



\$2.5 million

value of total produce donations



\$45K

volunteer gleaner labor value in 2021



Established gleaning operation in Lawrence, KS

Launched Hike Against Hunger & Buck\$ for Trucks online campaigns

Pivoted fundraising efforts to target specific, increased needs

Opened gleaning office at Rosedale Development Association

Increased local and national news coverage

IMPROVING NUTRITION

110 Million Servings of nutritious fruits and vegetables to enrich food pantry shelves



Fruit and Vegetable Varieties (up 110% over 2020)

Most Valuable microgreens (\$46.88/lb.) and assorted herbs including fennel, basil, mint, and dill (\$14/lb.)

Most Popular Donation

In 2021, watermelon made up more than 25% of all produce rescued.



Unique Eats

Jícamas are juicy, crunchy root vegetables packed with Vitamin C that taste like a cross between a potato and a pear.



fresh herbs
\$14 per pound



Kohlrabi is a member of the cruciferous family, and has a sweet, peppery taste and a texture similar to broccoli.

REDUCING FOOD WASTE

Sowing Seeds of Partnership

In 2021, ATH joined forces with Kanbe's Markets to launch Operation Redirect – an effort to rescue more produce from partners and distribute more healthy food to the community.



Fresh New Ride

In 2021, ATH purchased a refrigerated truck to allow us to rescue more fresh produce from partners around the Kansas City metro area, including farms, farmers markets, and produce distribution hubs.



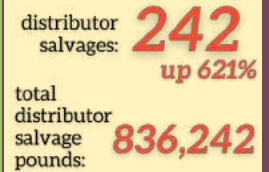
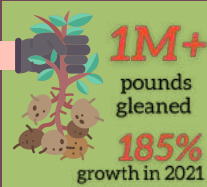
Growing our Fair Share Program

ATH partnered with Mennonite growers to increase the volume of locally grown produce, allowing us to rescue an additional 692,084 pounds.



GLEANING PROGRAM

We pick what's left in farmers' fields and pick up already harvested leftover produce.



DID YOU KNOW?

The concept of "gleaning" was first mentioned in the Bible in Leviticus 19:9. "When you reap the harvest of your land, you are not to reap to the very edges of your field or gather the gleanings of your harvest. You must not strip your vineyard bare or gather its fallen grapes. Leave them for the poor and the foreigner."

TRUCKLOADS PROGRAM

ATH raises funds to bring truckloads of donated produce to Kansas City for wide distribution by our partner, Harvesters. At 40,000 pounds per, each truck provides more than 160,000 servings of produce to our hungry neighbors.



Remembering Arnall Early

The ATH team was deeply saddened in December 2021 to hear that Arnall Early of Lone Jack, Mo. had passed.



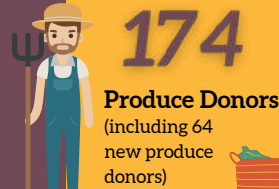
We met Arnall in late 2017. While not a farmer by trade, after retirement he decided he wanted to grow food to help people and planted butternut squash at his home. That fall, ATH volunteers gleaned 8,000+ pounds of butternut squash. Over the next four years, Arnall donated 31,261 pounds of fresh veggies.

Grower of the Year St. Isidore's Garden



FARMERS

2021 Hero Award
Joe Steineger
of Steineger Farm



VOLUNTEERS & LEADERSHIP



Team Leadership

"Clay Jarratt earned Superman status in 2021 when he stepped into the Gleaning Program Manager role alongside his Gleaning Logistics Coordinator role. He powered on in both roles through the end of November, taking a much-deserved break through December. The year's 185% growth in our Gleaning Program speaks to the excellence of Clay's leadership and hard work. Kudos, Clay!"

-Lisa Ousley, Executive Director



Truck Drivers of the Year

"Tom Decker and Randy Burdge have been VEG Squad members since the beginning, responding whenever we needed last-minute gleaning help. In 2021, after working the whole gleaning season with Bill Voigts doing nearly daily farm pickups and distributions, Tom and Randy heard that we needed two drivers. Yet again, these two volunteers stepped up – and they're still driving our truck, nearly five days a week, in fact!"

-Lisa Ousley, Executive Director

Pictured left: Suzy Conaway, dedicated VEG Squad member and produce driver.

After the Harvest is a 501(c)(3) nonprofit. Learn more at aftertheharvestkc.org.